

# Installation instruction do88 performance Y-pipe (991.1 and 991.2) 2013-

Part number: TR-200

This instruction shows how to replace the OEM Y-pipe with do88 performance Y-pipe.

At this type of installation we always recommend that you have mechanical experience and knowledge about safety during work on vehicles.

Parts included:

1. Y-pipe
2. Silicone hose left side
3. Silicone hose right side
4. Throttle body hose (only included for 991.1)
5. Hose clamps
6. MAP-sensor screw M5x12



**do88**  
Performance

**1.** Open both the engine lid and luggage compartment lid.  
Disconnect the negative battery terminal.  
Note! Do not close the luggage compartment lid after you have removed the battery terminal.

**2.** Lift and secure the car so both rear wheels can be safely removed.

**3.** From the rear inner fenders, Remove 5pcs Torx T25 screws and 1x Hex 10mm plastic nut on each side.

**4.** Remove the 4pcs Torx T30 along the top of the rear bumper.



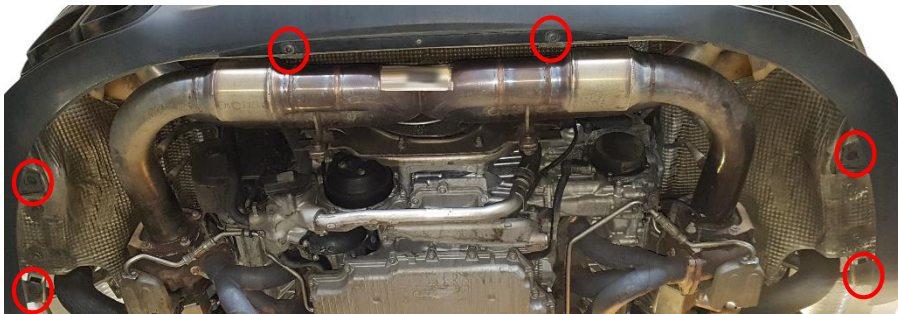
5. Loosen 2x Torx T25 and gently pull the rear light straight back. Disconnect the cable connector. Do this on both sides.



6. Remove 1x Torx T30 screw hidden behind rear light on both sides.



7. Remove 6x Torx T30 screws along the bottom of the bumper.

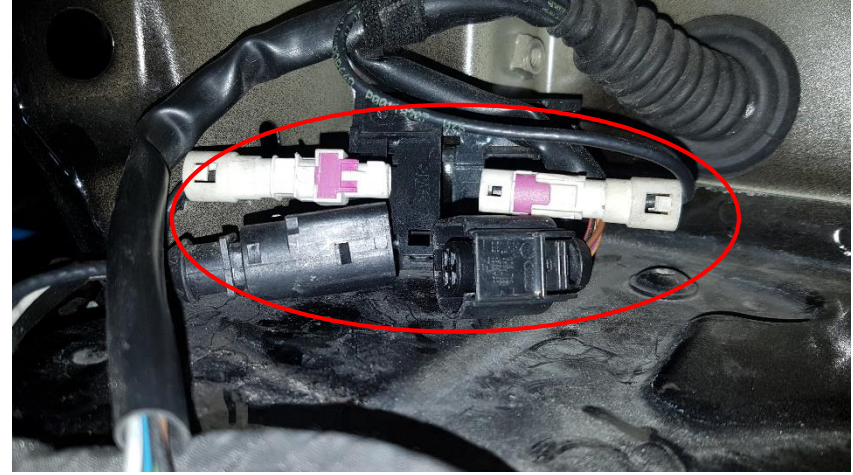
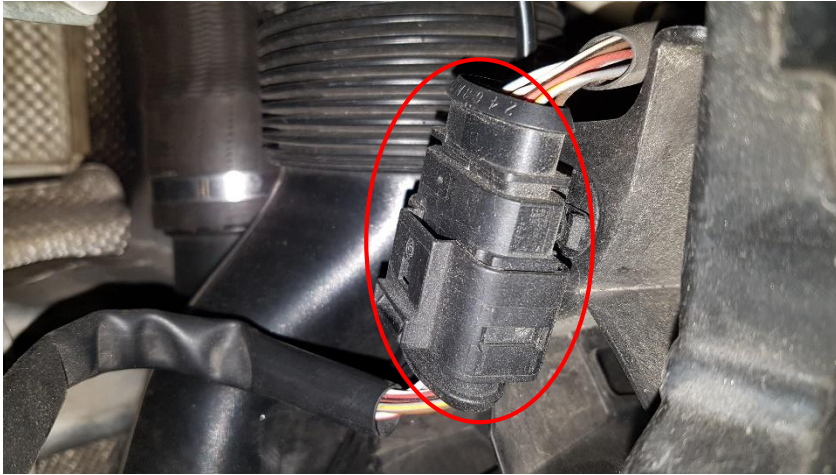


8. Remove 1pc Torx T30 screw in the top end of the bumper inside each wheel housing (hidden behind the wheel arch plastic).





9. Disconnect the cables going to the bumper on both sides.

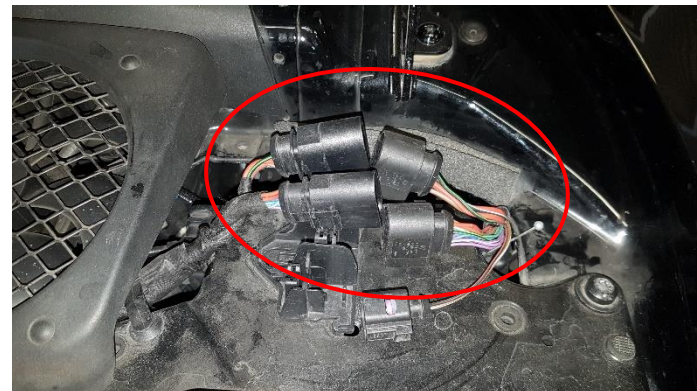


10. Now remove the rear bumper. With the help of a friend, gently pull each corner of the bumper out from the wheel arch edge a bit. Then remove the bumper by pulling it straight back.

11. Remove the fan cover. Firstly pull the rear end up, disconnect the two cables then remove fan cover.



12. Disconnect the 2 cables on the right side.





**13.** Remove the coolant cap and the 10mm hex screw. Now tilt up the plastic cover and reinstall the coolant cap.



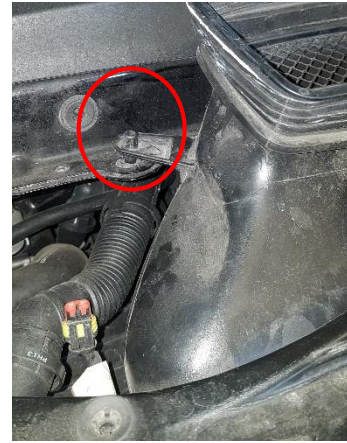
**14.** Remove 4x Torx T45 screws.



**15.** Push the plastic tab downwards and pull out engine lid lock cable.



**16.** Remove the plastic air duct by releasing the two rivets.

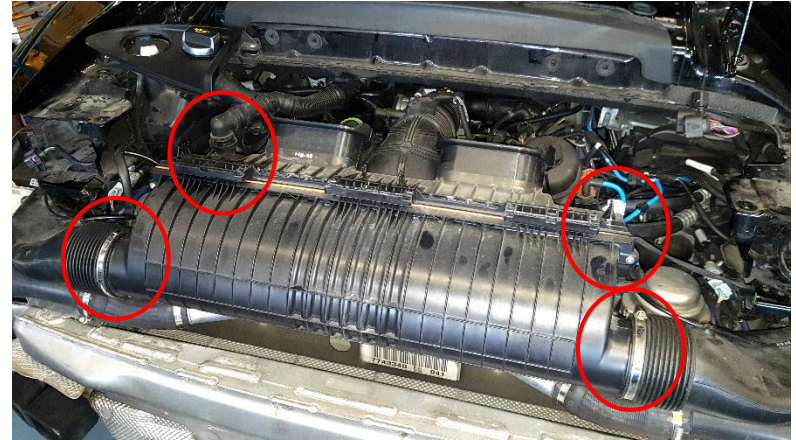




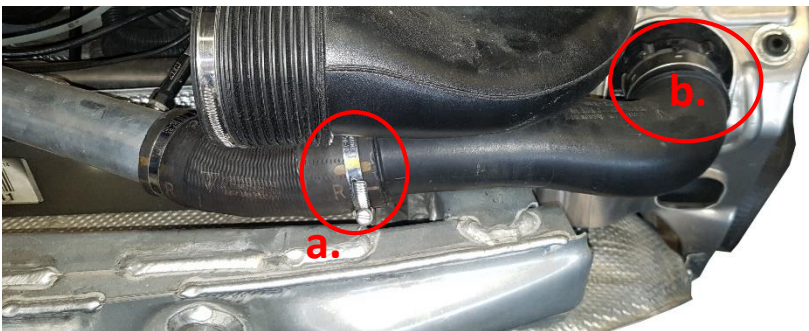
**17.** Now remove the wing motor plate.



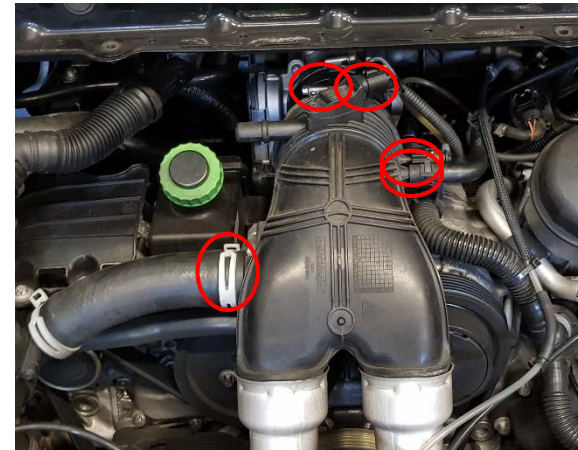
**18.** Remove 2x hose clamps, left side breather valve, right side solenoid valve and vacuum line. Then remove the air filter box.



**19.** a. If installed with OEM intercoolers loosen the clamp at the plastic intercooler pipe.  
b. If installed with do88 intercoolers remove intercooler outlet hose.



**20.** Disconnect 4 hoses and cable connector from Y-pipe. Then remove Y-pipe.



**21.** Remove the sensor from the OEM Y-pipe 1x Torx T25. Install sensor in do88 Y-pipe with the included M5x12 screw.



**22.** Install pipe with supplied hoses:  
991.1 with OEM intercoolers  
- Supplied throttle body hose (marked with TR-200-2S)  
- Supplied silicone hoses between Y-pipe and plastic intercooler pipes. (Both sides marked with TR-200-4S)

991.1 with do88 intercoolers  
- Supplied throttle body hose (marked with TR-200-2S)  
- Supplied silicone hoses between Y-pipe and intercooler outlets. (Left side marked with ICM-270-5S, right side marked with ICM-270-6S)

991.2 with OEM intercoolers  
- Supplied silicone hoses between Y-pipe and plastic intercooler pipes. (Both sides marked with TR-200-4S)

991.2 with do88 intercoolers  
- Supplied silicone hoses between Y-pipe and intercooler outlets. (Left side marked with ICM-270-5S, right side marked with ICM-270-6S)

**23.** Install all other parts in reverse order. With one exception which is that the airbox bottom stands might need to be trimmed/removed to make room for the Y-pipe.

