

# Installation instruction do88 performance Plenum 911 Turbo / Carrera (991)

Part number: TR-300-9912

This instruction shows how to replace the OEM plenum with do88 performance plenum.

At this type of installation we always recommend that you have mechanical experience and knowledge about safety during work on vehicles.

Parts included:

1. Plenum
2. Silicone hose left side
3. Silicone hose right side
4. 4x Hex screws M6x40
5. O-ring
6. Hose clamps



**do88**  
Performance

1. Open both the engine lid and luggage compartment lid.  
Disconnect the negative battery terminal.  
Note! Do not close the luggage compartment lid after you have removed the battery terminal.

2. Lift and secure the car so both rear wheels can be safely removed.

3. From the rear inner fenders, Remove 5pcs Torx T25 screws and 1x Hex 10mm plastic nut on each side.

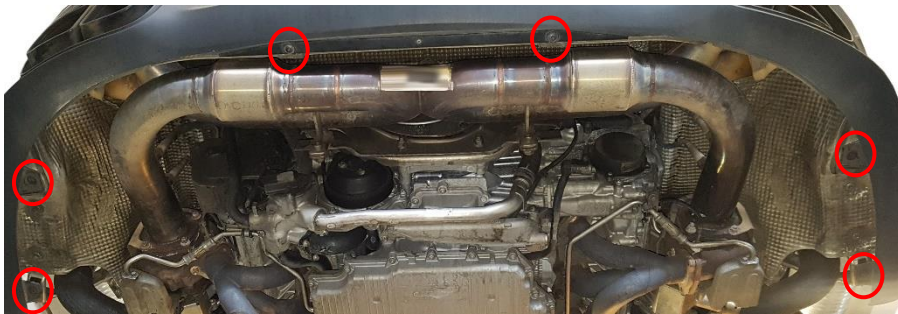
4. Remove the 4pcs Torx T30 along the top of the rear bumper.



5. Loosen 2x Torx T25 and gently pull the rear light straight back. Disconnect the cable connector. Do this on both sides.



7. Remove 6x Torx T30 screws along the bottom of the bumper.



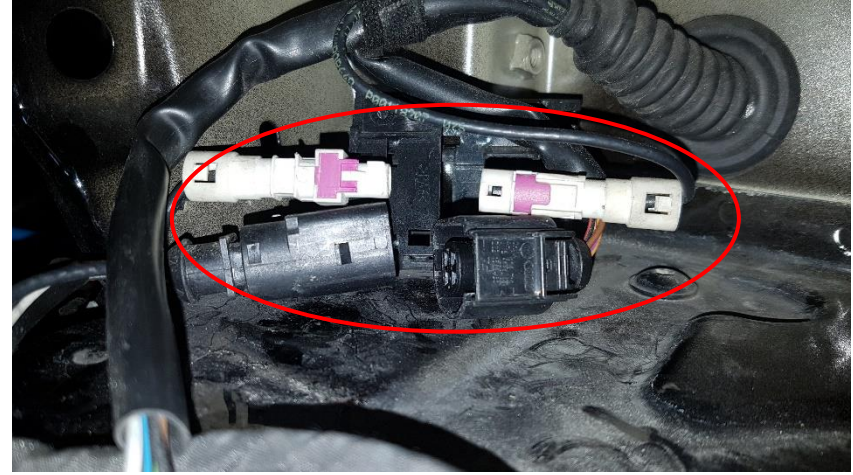
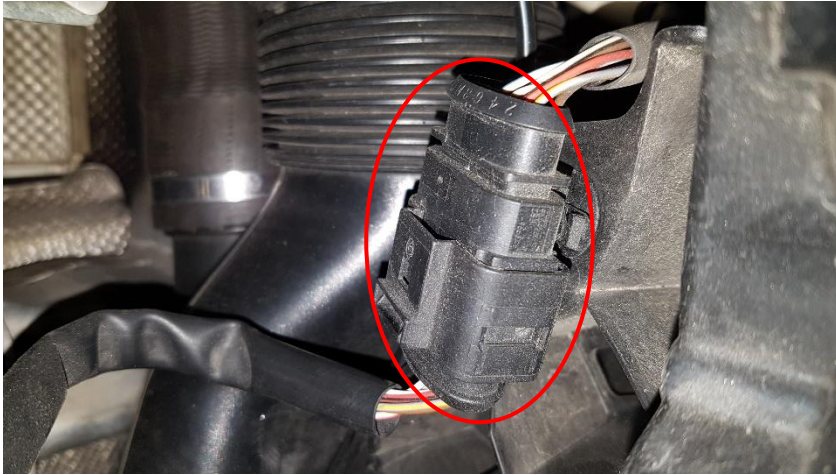
6. Remove 1x Torx T30 screw hidden behind rear light on both sides.



8. Remove 1pc Torx T30 screw in the top end of the bumper inside each wheel housing (hidden behind the wheel arch plastic).



9. Disconnect the cables going to the bumper on both sides.



10. Now remove the rear bumper. With the help of a friend, gently pull each corner of the bumper out from the wheel arch edge a bit. Then remove the bumper by pulling it straight back.

11. Remove the fan cover. Firstly pull the rear end up, disconnect the two cables then remove fan cover.



12. Disconnect the 2 cables on the right side.



- 13.** Remove the coolant cap and the 10mm hex screw. Now tilt up the plastic cover and reinstall the coolant cap.



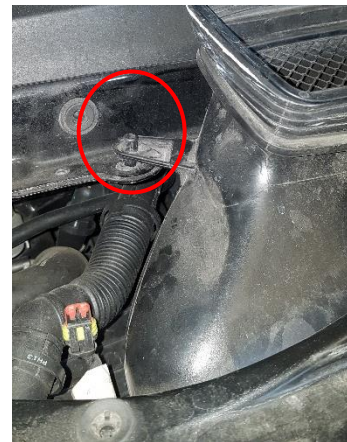
- 14.** Remove 4x Torx T45 screws.



- 15.** Push the plastic tab downwards and pull out engine lid lock cable.



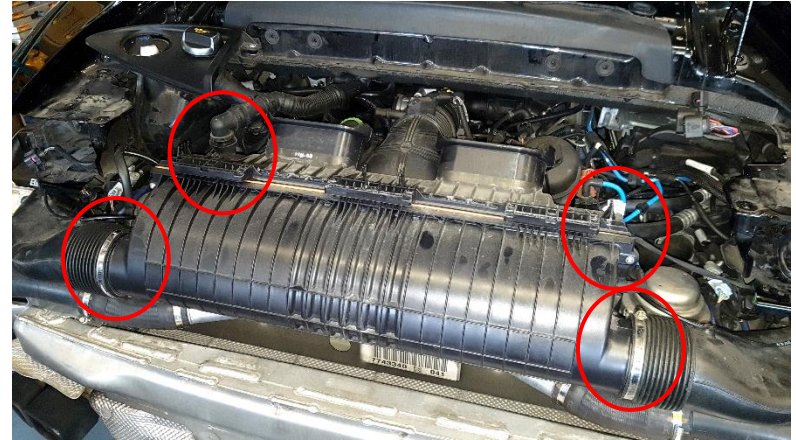
- 16.** Remove the plastic air duct by releasing the two rivets.



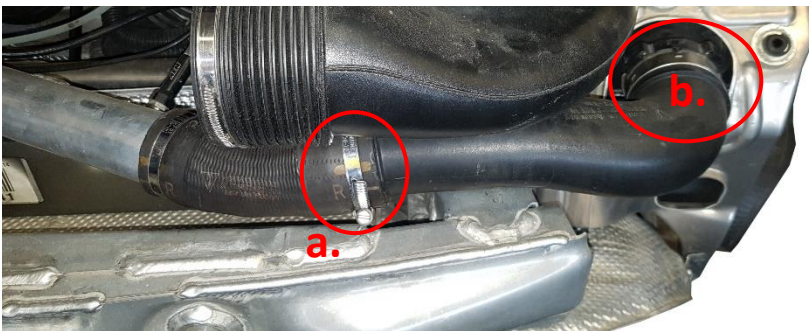
**17.** Now remove the wing motor plate.



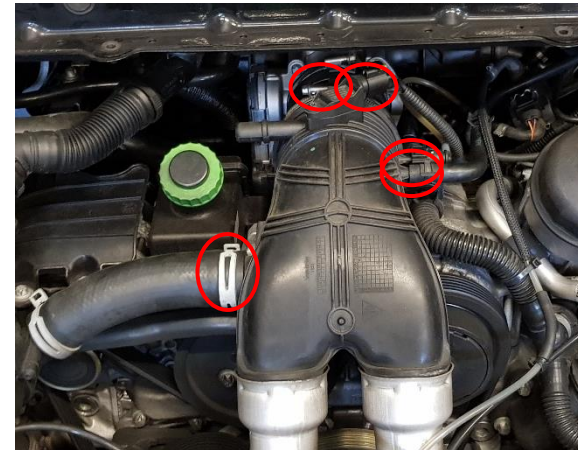
**18.** Remove 2x hose clamps, left side breather valve, right side solenoid valve and vacuum line. Then remove the air filter box.



**19.** a. If installed with OEM intercoolers loosen the clamp at the plastic intercooler pipe.  
b. If installed with do88 intercoolers remove intercooler outlet hose.



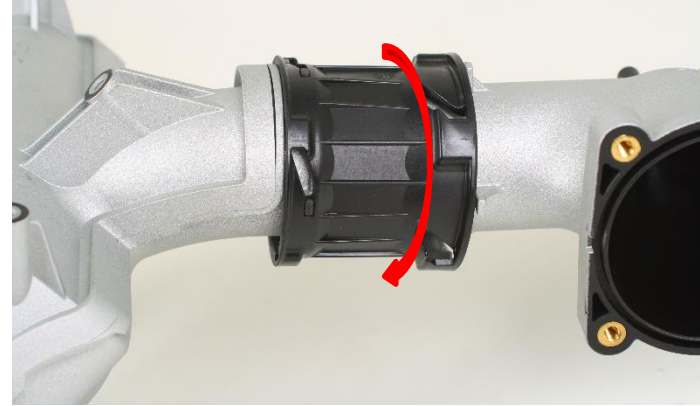
**20.** Disconnect 4 hoses and cable connector from Y-pipe. Then remove Y-pipe.



21. Remove the throttle body and disconnect the two hoses on the back side of the plenum.
- Remove 4x Torx screws
  - Disconnect cable connector



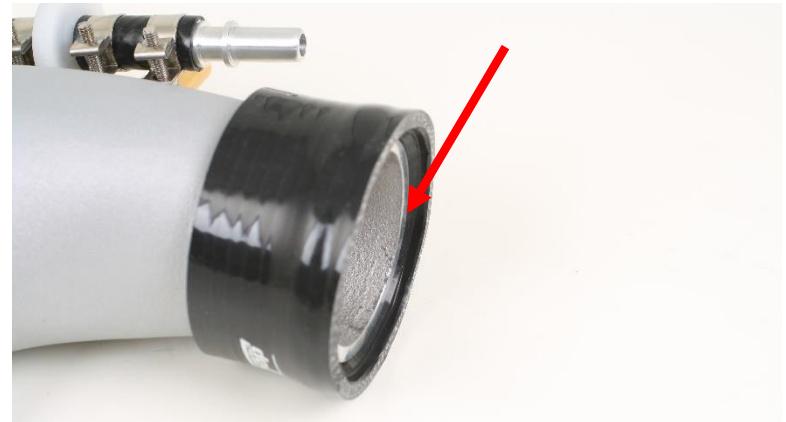
22. Turn the plenum locking devices on both sides to release and remove the OEM plenum.
- Important!** Remember to also remove the large O-rings on both intake runners!



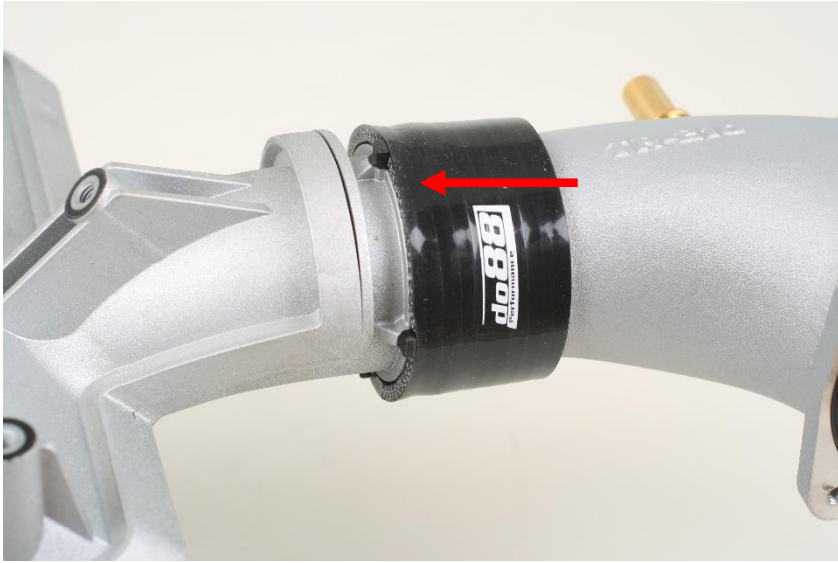
23. Lubricate both hoses and plenum with WD-40 / 5-56 or similar.



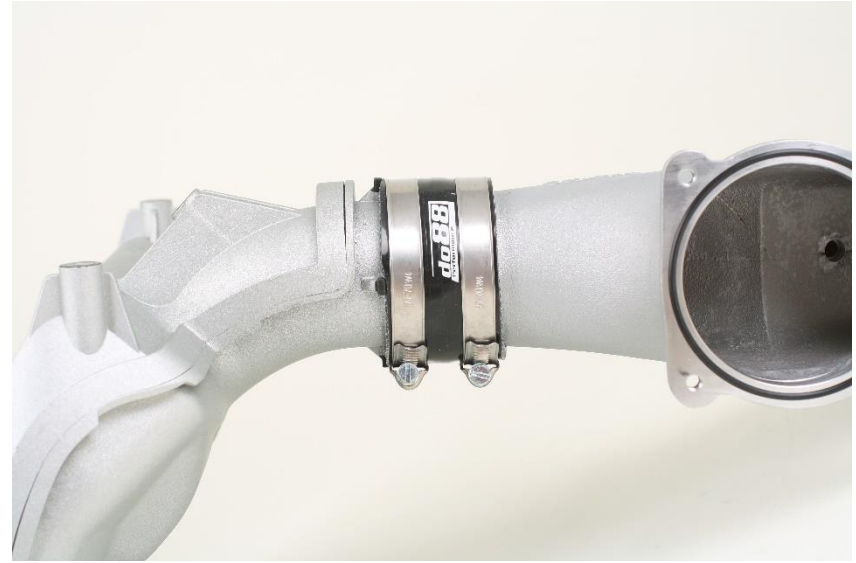
24. Push both hoses onto the plenum, stop when the silicone rib inside the hose is on top of the plenum hose bead. If you push them on too far they will be difficult to push on to the intake runner connections.



- 25.** Push the silicone hoses onto the intake runners on both sides. Make sure the ribs inside the silicone hoses securely fastens inside the intake runner grooves .



- 26.** Fasten the silicone hoses on both sides with the included hose clamps.



- 27.** Install all other parts in reverse order. With two exceptions:
1. Put the included O-ring inside the plenum groove before fastening the throttle body
  2. Fasten the throttle body with the included M6x40 screws.