

Installation instruction do88 performance Turbo intake hoses Porsche 911 TT (997) 05-08

This instruction shows how to replace the OEM turbo inlet pipes with do88 performance pipes.

At this type of installation we always recommend that you have mechanical experience and knowledge about safety during work on vehicles.

Parts included:

1. Left turbo inlet pipe 1pc
2. Right turbo inlet pipe 1pc
3. CNC machined VGT adapters 2pcs
4. CNC machined air port 1pc
5. Hose clamps 5pcs

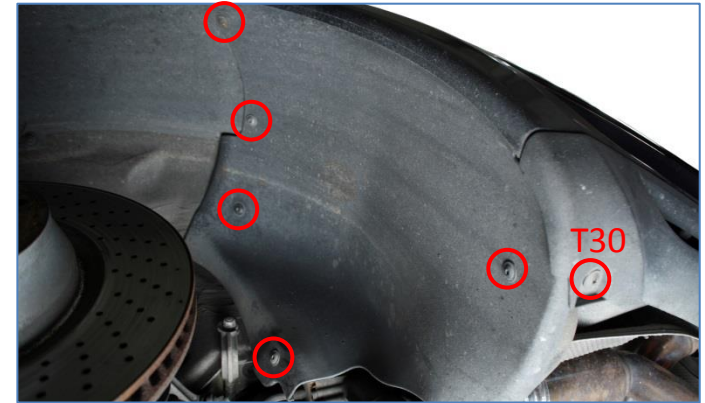


Important!

We often get the question if these hoses can be installed without lowering the engine/transmission. This installation guide shows how this can be done. But please note that it is tricky/difficult and will require 2 persons. Besides the standard tooling that is required for this job you will need some electrical tape and white grease.

1. Lift and secure the car so both rear wheels can be safely removed using a 19mm hex socket and socket wrench.

2. From each rear part of the rear inner fenders, Remove 5pcs Torx T25 screws and underneath one Torx T30 screw and then remove them from the car.



3. Remove the Y-pipe. Loosen the 3 hose clamps and disconnect the sensor cable.



4. Remove the Air filter box. Loosen the 2 hose clamps to the air mass meters and pull the hoses of them. Disconnect the small hose on the left side. Lift the air filter box straight up.

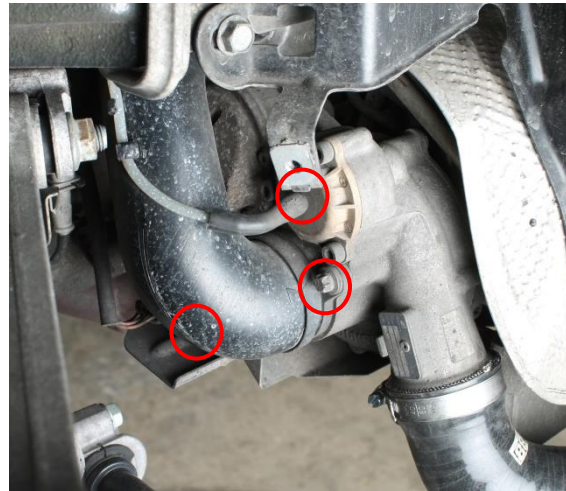


5.

Remove 4x Torx E10 screws on the turbo inlets.

Gently disconnect the vacuum hoses from the diverter valves. And unclip the vacuum line from the inlet pipes.

Pull out the inlet hoses and gently remove the o-rings. Save these for later.



6.

Disconnect the crank shaft breather hose on the left turbo intake hose. Do this by pressing on the tabs on the connection while pulling it outwards.



7. To make more clearance when removing the left stock inlet pipe and installing the do88 inlet pipe we recommend to loosen the fuel filter on the left side.

Loosen the hose clamp and unclick the fuel filter bracket from the coolant reservoir.

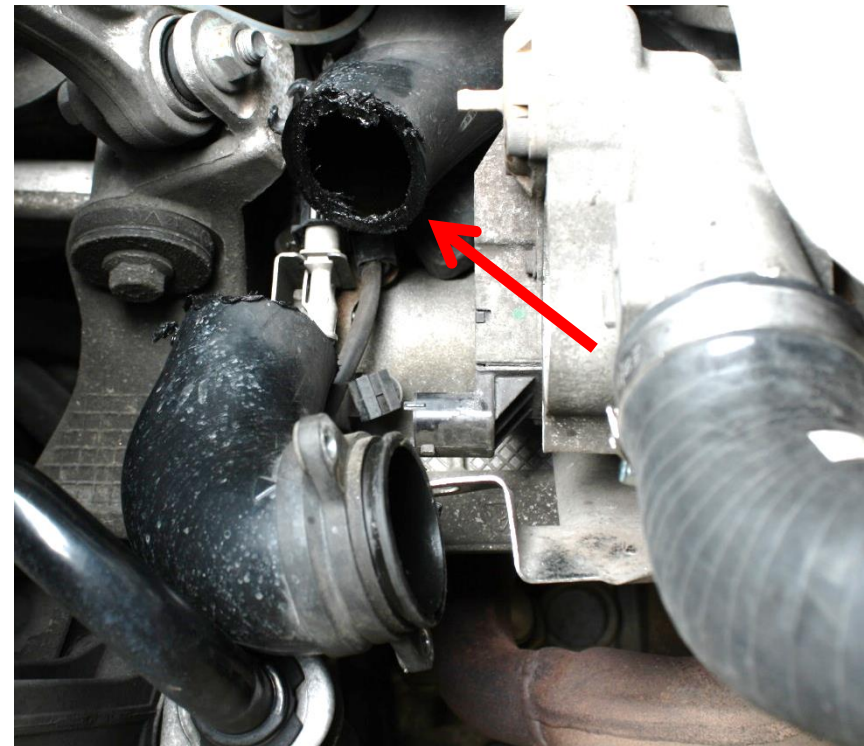


8. In the middle of each pipe there is a small bracket that is pushed into a small rubber bushing. Lift the pipe out of the rubber bushing.

Then pull each turbo inlet hose downwards as much as possible on each side.

Cut the hose as far up as you can reach with a hacksaw blade or a heated / melting Styrofoam knife. Make sure no dirt gets into the turbo inlets!

Now pull out the top parts of the OEM inlet pipes upwards.



Rubber bushing bracket.

9. Install left side do88 turbo inlet pipe:
1. Remove the rubber bushing from the small bracket.
 2. After removing the rubber bushing apply white grease on the metal bracket.
 3. Apply white grease onto the tightest passage between the engine and chassis.
 4. Install the hose from the engine side.
Push the hose downwards and meanwhile with the help of a partner pull the hose from the inner fender side.
 5. When the turbo inlet hose is in the correct position install the small CNC machined air port into the inlet hose together with the included hose clamp. And connect the crank shaft breading hose.

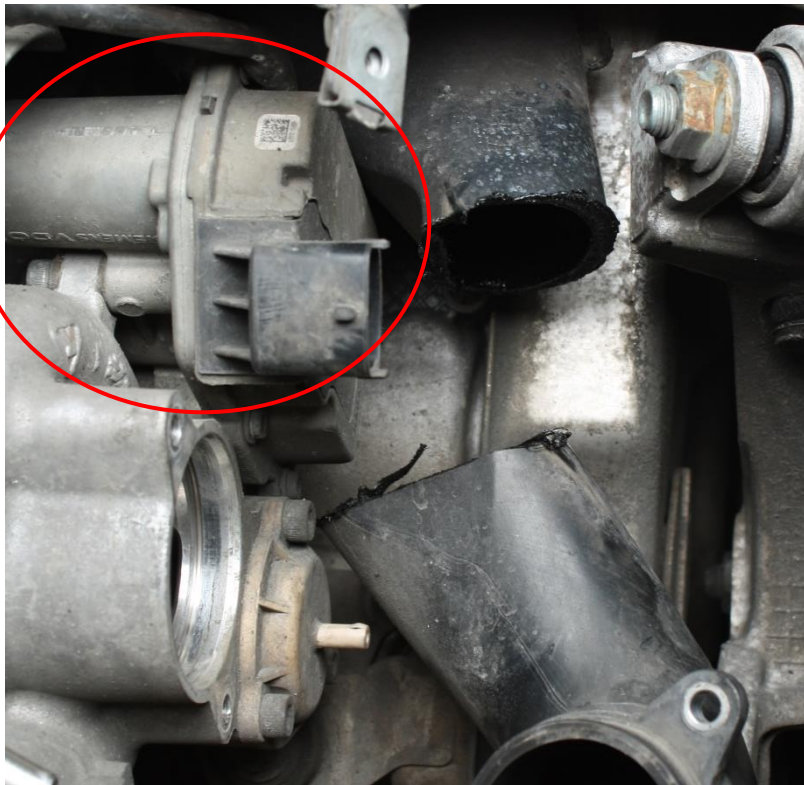


10.

Install right side do88 turbo inlet pipe:

1. Remove the rubber bushing from the small bracket.
2. After removing the rubber bushing apply white grease on the metal bracket.
3. Tape the top end of the inlet hose as shown on the photo. This must be done to reduce the size of the hose. Otherwise it is too big/impossible to install.
4. Apply white grease onto the tightest passage between the engine and chassis and the sides of the do88 inlet pipe.
5. Install the hose from inner fender side.
Push the hose upwards and meanwhile with the help of a partner pull the hose from the engine side.

Tip. There is very limited space on the right side. To make installation much more easy the VGT-unit on the right side turbo charger can be removed.



Tape the top end of the right side inlet hose to reduce size.

10.

Carefully install the OEM O-rings on the VGT adaptors as shown on the photo.



11.

Install the VGT adaptors onto the turbo chargers with the OEM screws. Connect the do88 inlet pipes and tighten them with the included hose clamps.

Install all other parts in reverse order.

